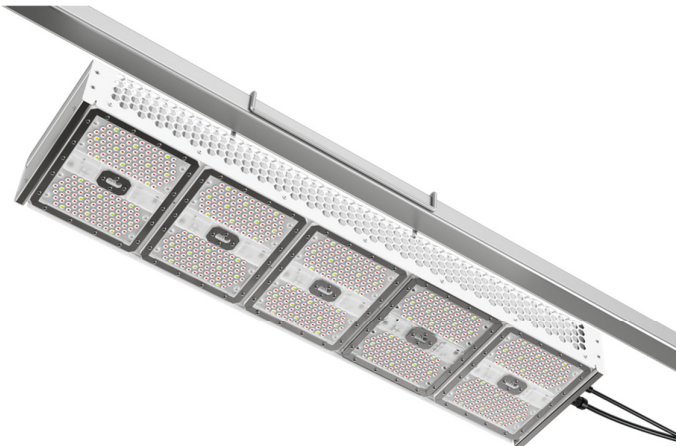


NLIGHT RV1000-3C



MECHANICAL SPECIFICATIONS

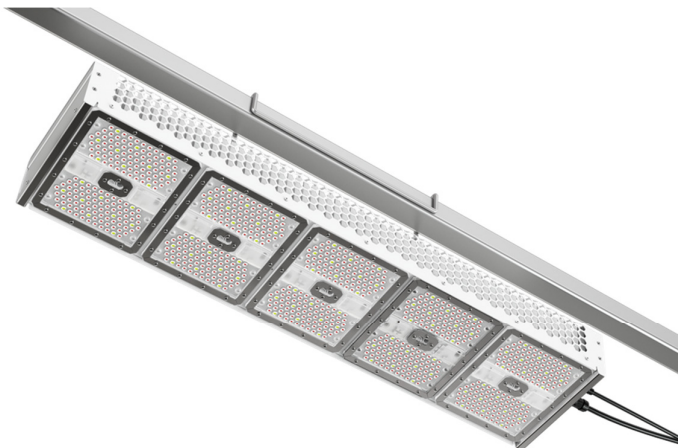
Light Fixture Dimensions	918L x 220W x 102H (mm)
Weight	11.6 (KGS)
Housing Material	Aluminium
IP Rating	IP66
PSU Dimensions	315.6L x 139.4W x 54H (mm)
Weight	3.49 (KGS)
Operation Temperature	-20°C to 40°C
Storage Temperature	-20°C to 45°C

ELECTRICAL SPECIFICATIONS

AC Voltage	347 - 400V	50/60Hz
Rating Power	1000W	
PF	0.95	
Inrush Current	Max. 6A	At 400V ac input, 25°C cold start
Surge Protection	EN 61000-4-5	Line to line 4 kV, line to earth 6 kV
Leakage Current	0.75 mA	400Vac / 50Hz input, grounding effectively
Isolation Class	Class I	
Dimming	Down to 10%	RS485

CONTACT INFO@N-LIGHT.TECH FOR MORE INFORMATION

NL/GHT RV1000-3C



OPTICAL SPECIFICATIONS

Spectrum	90R 5G 5B + 10FR	
PPF (400-700nm)	3600 μ mol/s	+/- 5%
Efficacy up to	3.8 μ mol/s/WN	+/- 5%
Beaming Angle	144.6x158.9° / 142.9x153.1°	+/- 6°

OTHER SPECIFICATIONS

Risk Group accr. to IEC 62471:2006	Risk Group 0 (RG0)	This product has been tested by DEKRA and classified as posing no photobiological hazard.
Expected Lifespan	50,000 hours	L90B10 at 36000 hours
Wireless control	Bluetooth Mesh Network	Each lighting fixture is equipped with a Bluetooth Dongle, enabling it to connect via Bluetooth to a BRIDGE. The BRIDGE is connected to the TCP/IP network via a CAT6 cable, allowing seamless integration with multiple BRIDGES. A Master Gateway can be connected within the same network to manage and control hundreds of BRIDGES, providing stable and efficient centralised control.
Individual Channel Control	3 Channels control with Power Shelf Function	
Connection	Wieland RST20i3 Series	

CONTACT INFO@N-LIGHT.TECH FOR MORE INFORMATION